

# Town of Onalaska

W7052 Second Street, Onalaska, WI 54650  
608-783-4958 Fax 708-779-9605

[HTTP://WWW.CO.LA-CROSSE.WI.US/TOWNOFONALASKA](http://www.co.la-crosse.wi.us/townofonalaska)



## Newsletter Spring 2013

### Lots of upcoming events to enjoy in our Town

- **The annual Brice Prairie Rummage Sale is coming up soon, on Friday, April 19<sup>th</sup> and Saturday, April 20<sup>th</sup>. Many households on the prairie will be participating in this neighborhood rummage sale.**
- **Brice Prairie Lions Club Chicken-Q, Saturday April 20<sup>th</sup> (same day as rummage sale) from 11 AM till 4PM at the Brice Prairie First Responder Building on County Road ZN.**
- **Brice Prairie Youth Baseball Chicken-Q, Saturday April 27<sup>th</sup> from 11 AM till 5 PM at the Brice Prairie First Responder Building on County Road ZN.**
- **Brice Prairie EMS and Rescue is sponsoring a Boater Safety Course for kids age 12 and older on Saturday, May 11<sup>th</sup> from 8AM to 3:30 PM. The course will be taught by the US Coast Guard Auxiliary and Wisconsin DNR. Upon completion, students will receive a DNR boater safety certificate and card. The fee is \$20.00 to the USCG Auxiliary. If funding is a problem, financial assistance is available. Contact Phil Jones at 608-781-1267 or Fritz Funk at 608-799-7533 to register. The course is limited to the first 20 students. If it fills and there is still interest, another course will be scheduled.**
- **The 32<sup>nd</sup> Annual 10 and Under Baseball and Softball Tournament will be hosted by Brice Youth Baseball on Friday, June 14<sup>th</sup> and Saturday, June 15<sup>th</sup>. Please plan to attend and support our youth. Fun for the entire family.**
- **The 9<sup>th</sup> annual Brice Prairie Bike Races and related events will be headquartered at Swarthout Park on Brice Prairie on June 28<sup>th</sup> and 29<sup>th</sup> and in Holmen on June 30<sup>th</sup>. This event is the largest gathering of people from outside our area to visit and see what the Town of Onalaska has to offer. The races typically draw about 150 racers and over 100 volunteers. Please plan to attend and make our Town's visitors feel welcome. For additional information about the event, please contact Steve Johnson at 608-383-3071 or [sjgolf@aol.com](mailto:sjgolf@aol.com). Volunteers are always needed. Contact Steve if you can help.**
- **The Brice Prairie First Responders annual "Rockin the Prairie" will be held on Saturday, August 10<sup>th</sup>, with doors opening at 4:30PM. This year headliner entertainment is Redline Outline Band, who will perform from 8-12 PM, with At Large leading off from 5-7 PM. Advance tickets will be on sale at Kwik Trip on Hwy 35, Kwik Trip on OT, Brice Prairie Pub and Eatery and Red Pines. This is always a great event, and is the primary fund raiser for the Brice Prairie First Responders. Please plan to attend and support a great cause.**
- **Brice Prairie Youth Baseball will host their year-end picnic/party at Swarthout Park on Sunday, July 28<sup>th</sup>. This event is open to the public and all Town residents are invited to attend.**

Anytime you, or an organization you are involved in, is holding an event in the Town that is open to the public, please tell us about it so we can tell others. If the timing works for our Newsletter we will include it here. If not, we can post your event in the same places we post Town meeting notices, and we could also put it on our Town website. If we have missed any event in the list above, please let us know and we help you get the word out. We want to partner with all our residents in these things as often as we can. The Town of Onalaska is an active, fun place to live, work, and play. Spread the word.

## New Fire Signs - Update

The new 911 fire number signs continue to be installed, replacing all the old signs eventually. The new signs are being placed alphabetically by street name. In some cases, we are finding errors in addresses, and are working with La Crosse County, who will notify anyone

whose address will be corrected. When your new sign is placed, please remember that there is a Town ordinance prohibiting anyone from moving or relocating this sign. It must remain in place where it is placed, next to your driveway.

# Historical designation for Town Hall and Cemetery



The Town recently received its plaques for the Asbury Cemetery on County Road ZZ and the Town Hall in Midway, designating both sites as recognized La Crosse County Historical Sites. Our Deputy Clerk, Gerald Monti completed all the research and the required applications in obtaining these valued designations.

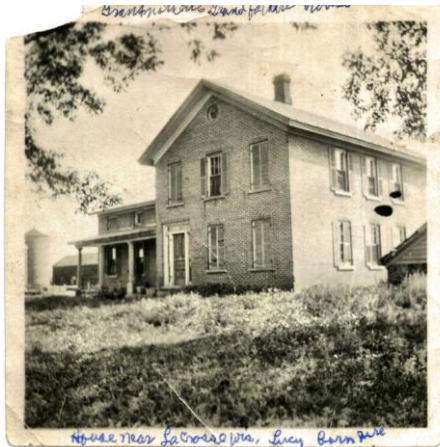
It is possible that this may afford us some historical grant fund possibilities if the Town Hall addition and restoration of the current space is approved. Thank you so very much Jerry for all your hard work on this.



## Our history revisited . . . more news for you

As he continues to delve into the history of our Town, Deputy Clerk Monti has been in contact with Jeanne Swick, author of the historical book "Little, Lyttle, Lytle....The Life of John Lyttle and Related Families". Her book is currently archived at the main branch of the La Crosse Public Library.

Jeanne is the great granddaughter of Julia Lyttle, who was the fifth and last wife of John Lyttle. John's previous wives had all died. This is the only known photo of the Lyttle home at Midway, Wisconsin. The fully remodeled home is at N5861 County Highway Z on what we now call Brice Prairie.



John Lyttle died in 1893, and his grave marker is in our Asbury Cemetery on County Road ZZ on Brice Prairie



Jeanne has been gracious enough to provide me with links to articles and photos far too numerous to include in this Newsletter. Some day we may be able to include this, and much more information about the history of our entire town, in the Town Hall addition.

If anyone is interested in the links to the more extensive articles and pictures, let me know at [sandy.thompson@townofonalaska.org](mailto:sandy.thompson@townofonalaska.org) and I will forward them to you.

## A note from Hilltopper Refuse and Recycling

By now the problem is probably already under control, but we wanted to remind you all of a couple things that will really help our refuse and recycle hauler. In the past there have been times when the Town garbage bags have been overfilled and not tied securely at the top. As you can imagine, this can lead to bags spilling out and the workers cleaning up the spillage. Technically, IF the garbage is not in the secured bag, Hilltopper is not supposed to pick it up. Previously, they have placed stickers at the residences that might have presented these problems. We are confident that this is no longer a problem, but a gentle reminder is often helpful for all. Please remember to securely tie your Town of Onalaska garbage bags before placing them at the curb and place recyclables in the recycle containers provided by the Town. If you do not have a recycle bin, please stop by the Town Hall to get one. Garbage bags are also available for purchase at the Town Hall.

# Stormwater Flowing Everywhere

Whether in the bluffs or on the prairie water from rain and melting snow is running this March in ditches and swales and gathering in low areas all over the Town. During these wet times the road ditch, driveway culvert, backyard swale and neighborhood storm-water pond prove quite valuable. They keep the water off the roads, out of basements and moving away from homes.

Look around the Town and you can see how planning for storm-water provides benefits not visible during the dry times of the year. Most farm fields have waterways and structures to control runoff and prevent erosion. Storm-water planning for those farm fields had its origin the 1930's to control erosion and conserve water. Older established subdivisions usually have minimal storm-water features and can suffer local flooding from storm-water.

Newer subdivisions have storm-water features built right into the land that provide a place for water to flow away from roofs, driveways and roads through swales and into ponds. Like roads, parks and public areas storm-water features require time and money to maintain. Besides reducing local flooding, storm-water features protect water quality by controlling erosion, catching water pollutants, allow water to percolate into the ground and using the vegetated land surface to slow and filter the water.

As the Town grows storm-water management is part of the development approval process and its purpose is to keep basements dry, roads safe, protect the land surface and keep the ponds and streams clean.



**A new stormwater retention pond that is working in one of our subdivisions.....**



**....and older areas where water retention was not planned for.**



**Drive with care in areas where water sometimes ponds on our roads during Spring thaws or during heavy rain events.**

## Let's Play Ball . . . soon

Spring is sure to be here soon . . . it must be coming, really. And that means we will soon see youth baseball in our parks again. Our ball fields are used by Brice Prairie Youth Baseball and Holmen Youth Baseball. The Town now provides electricity at some of the fields and Brice Prairie Youth Baseball uses the Roth Field shelter for secure storage of their equipment. We are pleased to partner with these groups to help promote youth baseball in our Town. We recently decided that the Town would be providing for the port-a-potties only in the Swarthout and Marvin Garden parks (where shelters are available for rental) and at our boat landings. This allows the baseball organizations to provide for their own port-a-potties at the ball fields as needed. This change was made to allow the organizations to enter into their own contracts with the port-a-potty provider of their choice, and to be able to require the providers to service the facilities when needed. In the past, when the baseball organizations contacted the Town's contracted provider, they were not able to get the service that they needed because the provider would only communicate with the Town. We did not make this choice to inconvenience the youth baseball organizations at all, but rather to give them the control that they needed during the season with the port-a-potty provider. We thank both organizations for their understanding and cooperation and wish them a successful season and lots of great summer weather to play ball.

## **From the Town Crew regarding brush and chipping**

The Town is encouraging curbside chipping, which will start in May - dates are in your 2013 recycling calendar. Residents are asked to call the Town hall by the Monday before chipping starts. Branches need to be on your own property, and **NOT IN THE PARKS**. Brush can also be brought to the Large Item Recycling Center **on recycle days ONLY**, but not until May (when curbside starts). If you do not have a recycle calendar, you may pick one up in the Town hall, or find it on the Town's website.

## **Suit finally settled in favor of Town**

The Town of Onalaska was successful in its recent attempt to obtain the return of Town records from its former Assessor, Bud Raymer. Judge Elliot M. Levine ruled that Mr. Raymer inappropriately withheld files and records in his possession after he lost his certification to act as an Assessor in Wisconsin municipalities. Mr. Raymer's term of office ended on June 1, 2011 for failing to maintain the required continuing education credits necessary to maintain his certification. Judge Levine awarded the Town the maximum forfeiture available under law, \$2,000.00 plus the costs of the action.

**TOWN OF ONALASKA**  
**W7052 Second Street**  
**Onalaska, WI 54650**

## **Dogs . . . . is one enough? Are three too many?**



The Town Board is regularly seeing approval requests for additional dogs from its residents, and we often hear “we didn’t know there was a limit”. The Town does have an ordinance regarding the number of allowable dogs per residence, and we wanted to let you all know what it says. To make a long story short, IF you live in an area zoned for residential use or within a subdivision, only two (2) dogs over the age of five months are allowed. IF you live in any area zoned for rural or agricultural use (except in platted subdivisions) no more than four (4) dogs are allowed per residence. Owners with more than 4 dogs must obtain a Kennel/Commercial Animal Operation permit through La Crosse County. All dogs over five months old must be licensed, and collared with owner identification tags. The ordinance also provides that you must “clean up” after your dog on any street, alley, or other public or private property.

In most cases, additional dog requests have been approved by the Town Board, but may be denied or rescinded at any time if problematic circumstances so warrant. If you are a dog owner, please take the time to check out the entire Ordinance on the Town’s website or request a copy from the Town Hall.

***Come on Summer and Sunshine. We miss you!!***

---

The Town of Onalaska’s website is a valuable resource and offers you a wealth of information about your Town. Check it out regularly.  
Don’t forget to let us know if you would rather receive this Newsletter electronically.  
Call or e-mail the Town Hall with your e-mail address and we will send you a message when future newsletters are posted on the website.

---